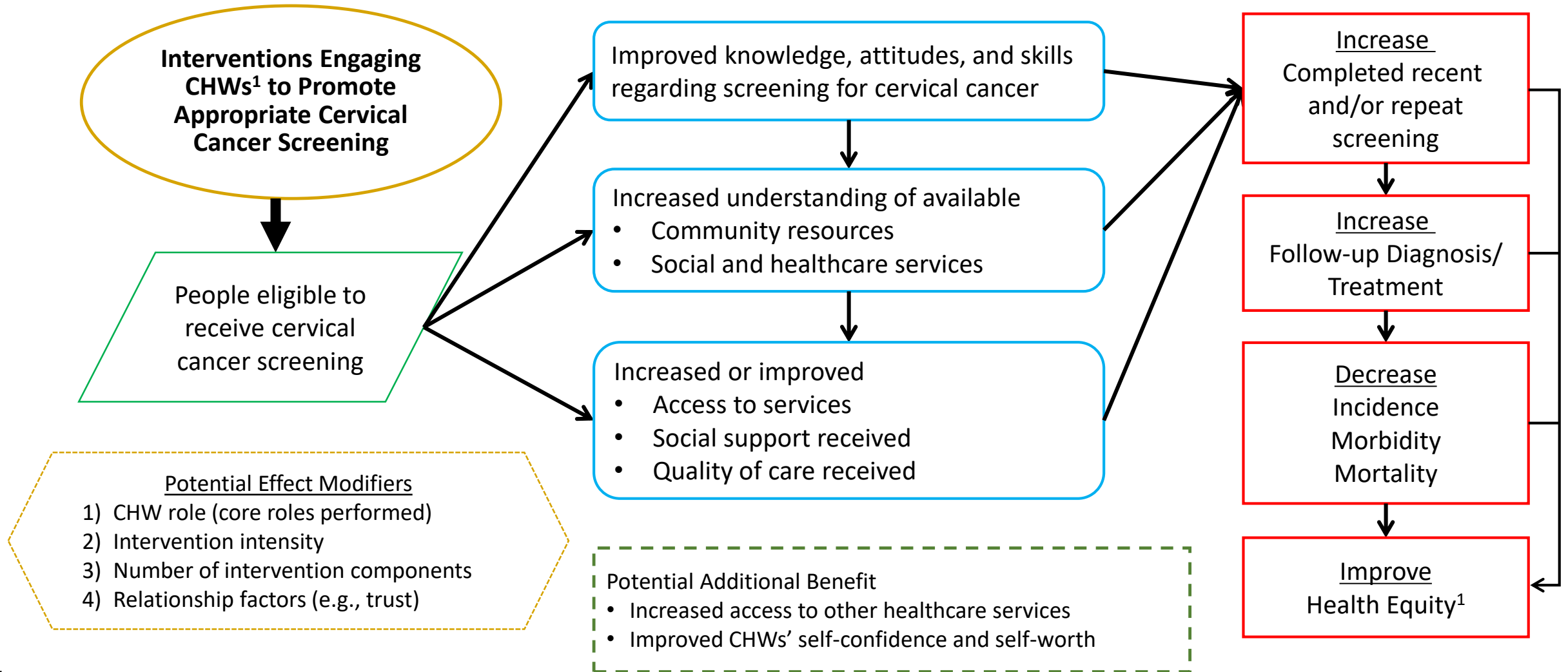


Analytic Framework: Interventions Engaging CHWs to Promote Cervical Cancer Screening



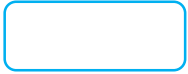






Accessible Version: <https://www.thecommunityguide.org/sites/default/files/assets/AF-cervical-cancer-screening-chws-508.pdf>



¹Interventions engaging CHWs typically implemented in underserved communities

Source: Guide to Community Preventive Services. Cancer Screening: Interventions Engaging Community Health Workers – Cervical Cancer. <https://www.thecommunityguide.org/findings/cancer-screening-interventions-engaging-community-health-workers-cervical-cancer>

Icons in Community Guide Analytic Frameworks

Icon	Interpretation
	Intervention
	Recommendation outcome
	Other intermediate outcome/variable (that are not recommendation outcomes)
	Population
	Key Potential Effect Modifiers (affecting causal relationships)
	Additional benefits/Potential Harms/Disparities
	Unidirectional block arrows are applied between intervention and population icons
	Unidirectional arrows for causal relationships
	Bidirectional arrows show feedback loops