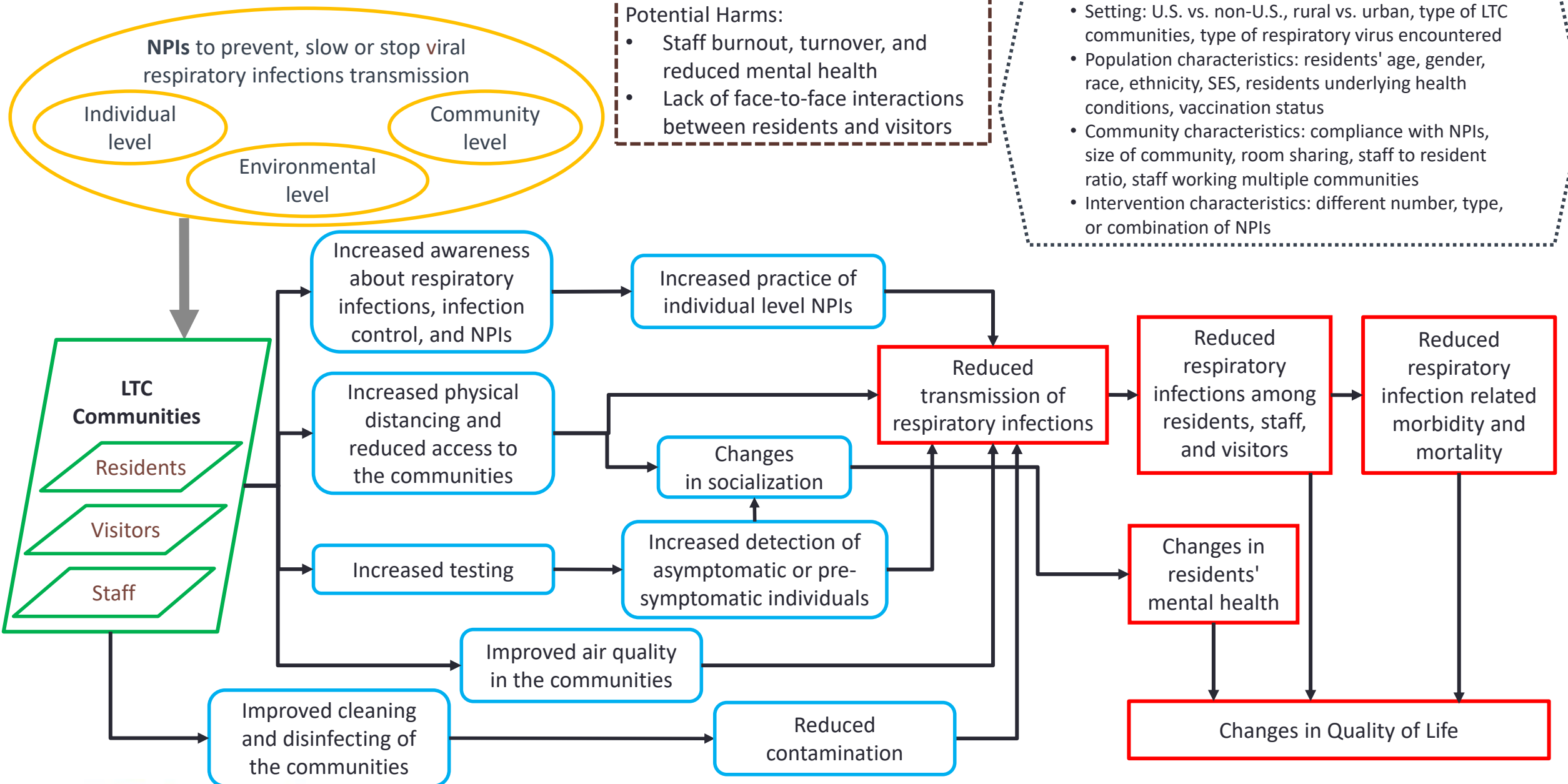


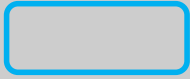
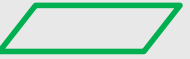







# Analytic Framework



# Icons in Community Guide Analytic Frameworks

Icon	Interpretation
	Intervention
	Recommendation outcome
	Other intermediate outcome/variable (that are not recommendation outcomes)
	Population
	Key Potential Effect Modifiers (affecting causal relationships)
	Additional benefits/Potential Harms/Disparities
	Unidirectional block arrows are applied between intervention and population icons
	Unidirectional arrows for causal relationships
	Bidirectional arrows show feedback loops